

JH

○/2031H

SATB

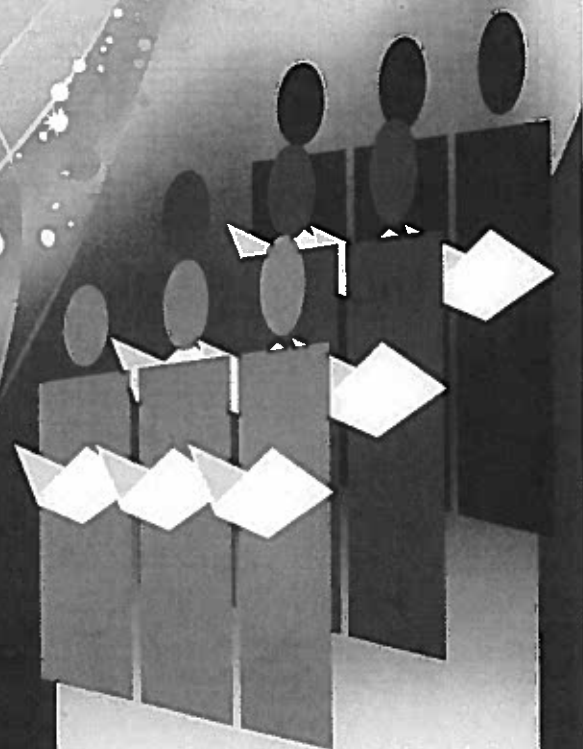
O Nata Lux

Tom Porter

Also available:

Three-part Mixed (15/2374H)

Performance/Accompaniment CD
(99/2242H)



**HERITAGE
MUSIC PRESS**

A Lorenz Company • www.lorenz.com

O Nata Lux

SATB Chorus and Piano*

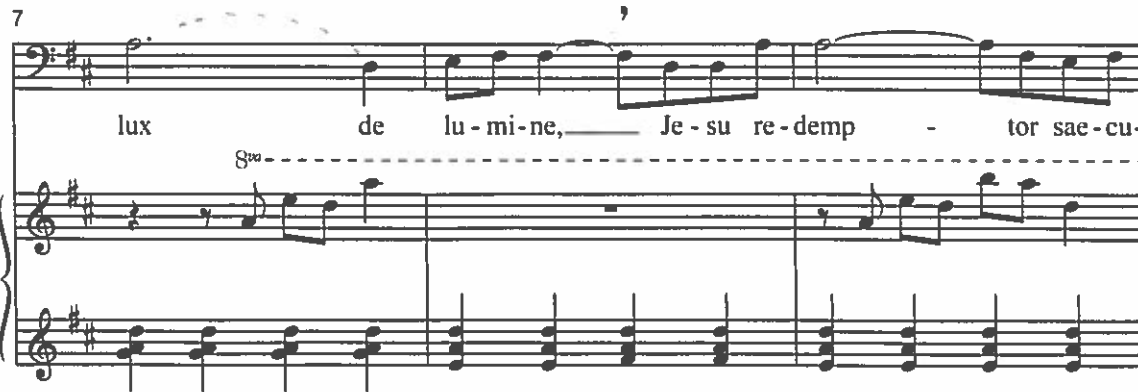
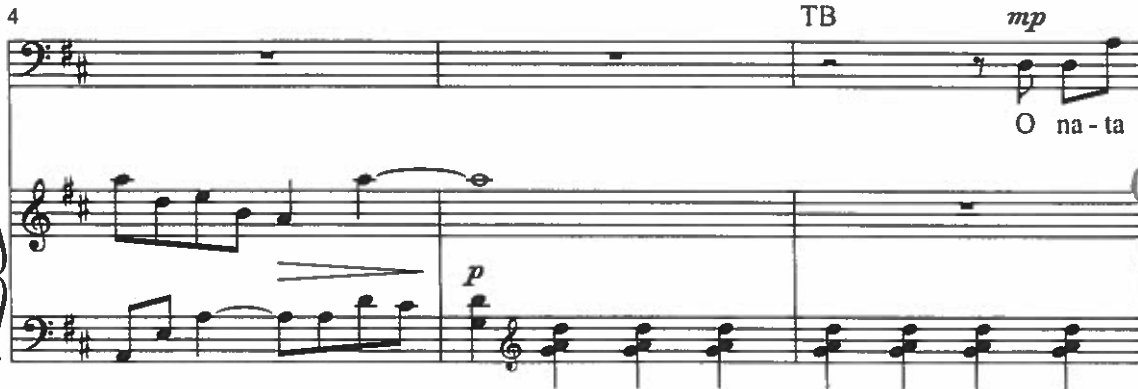
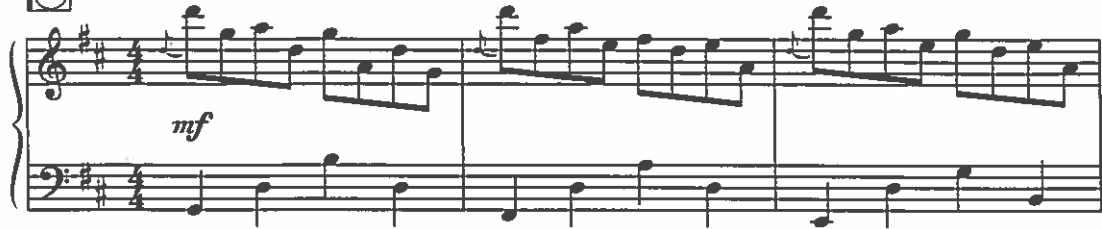
Traditional Latin

Tom Porter

Ranges: Soprano Alto Tenor Bass



① Prayerfully ♩ = ca. 69-72



Duration: approx. 3:15

*Also available: Three-part Mixed (15/2374H); Performance/Accompaniment CD (99/2242H).

© 2005 Heritage Music Press, a division of The Lorenz Corporation. All rights reserved. Printed in U.S.A.

Unauthorized reproduction of this publication is a criminal offense subject to prosecution.

THE CCLI LICENSE DOES NOT GRANT PERMISSION TO PHOTOCOPY THIS MUSIC.

www.lorenz.com

10 *mf*

li, dig-na-re cle - mens sup-pli-cum

(S^{ra})-----

13 *mp* ches

laud - es, laud - es, laud - es pre-ces que

(S^{ra})-----

16 2 SA *mf*

O na-ta lux de

TB *p*

su-me-re. O

mf

19

lu - mi - ne, Je - su re - demp - tor sae - cu - li, dig - na - re

na - ta lux, O na - ta lux,

22

cle - mens sup - pli - cum *mf* *mp* laud - es,

O na - ta lux de lu - mi - ne, *mp* laud - es,

25

laud - es, laud - es, pre - ces que su - me - re, *p*

— laud - es, laud - es pre - ces que su - me - re, O na - ta

28 3 *p* *mf*

lux. Qui car-ne quon - dam

31

con-te-gi— dig-na-tus es pro per - di - tis,

34 *f*

Nos mem-bra con - fer ef - fi - ci, tu - i — be - a - ti



37

S *rit.* *a tempo mf*

cor - po - ris. O

A *rit.* *f* *a tempo*

cor - po - ris. O na - ta lux de

T *rit.* *a tempo mf*

cor - po - ris. O

B *rit.* *a tempo*

cor - po - ris.

40

na - ta, O na - ta lux, dig-na-re

lu-mi-ne, Je-su re - demp - tor sae-cu - li,

na - ta lux, *mf* O na - ta lux,

Na - ta lux, na - ta

13

cle - mens sup-pli-cum, O na -

O na - ta lux de lu - mi - ne, laud - es,

O na - ta lux de lu - mi - ne, laud - es, —

lux, na - ta lux, O

46

5

- ta, laud - es, O na - ta

laud - es, laud - es pre-ces que su-me-re.

— laud - es, laud-es pre-ces que su-me-re, O na - ta

na - ta lux de lu - mi -



49 *mp*
lux, _____ O na - ta, _____ O
mp
Na - ta, _____ O na - ta, _____ O
mp
lux, _____ Na - ta, _____ O na - ta, _____
mp *p*
ne, _____ Na - ta, _____ O na - ta, _____
8^{va}
mp

53 *rit.* *p*
na - ta, _____ O lux. _____
rit. *p*
na - ta, _____ O lux. _____
pp *rit.*
_____ O na - ta lux. _____
pp *rit.*
_____ O na - ta lux. _____
(8^{va})
p rit.